

Explore your Aspirations

**db**  
**Astoria**

NEAR RASULGARH, BHUBANESWAR





A person is standing on the right side of the frame, looking out over a tropical landscape. In the foreground, a large, dark tree trunk leans from the left. The background features several palm trees and a bright, hazy sky. The overall scene is bathed in warm, golden light, suggesting a sunset or sunrise. The text "Luxury You Truly Deserve" is written in a white, cursive font across the middle of the image.

*Luxury You Truly Deserve*





If you're looking for a unique home in a convenient and desirable location, look no further than **DB ASTORIA.**



# *Explore your Aspirations*

Welcome to a chic living.

A home of families, **DB ASTORIA** speak elegance from every corner,  
be it the drop off point at the gate or the modern elevation.







*Your paradise on Earth*





# *The Sweetest Moment of life*

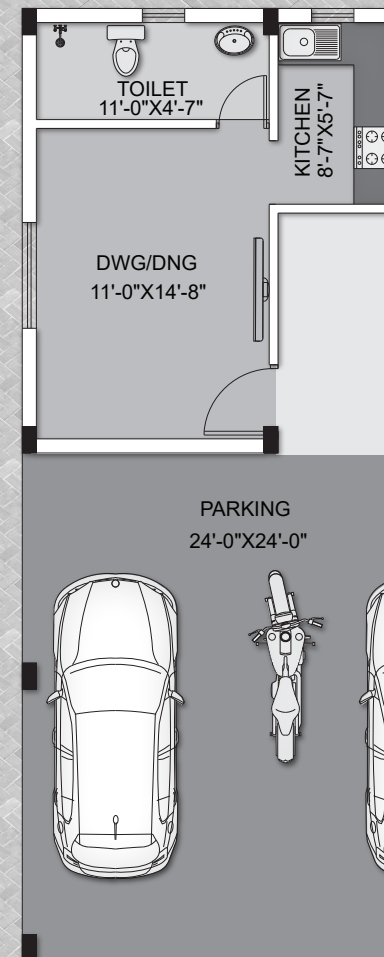
- Individual Borewell
- 30' Wide Internal Road
- 24 Hr. Security
- CCTV Surveillance
- Community Hall
- Provision for Power Backup
- All Round Plantation
- Septic Tank & Soakpit



Type-01

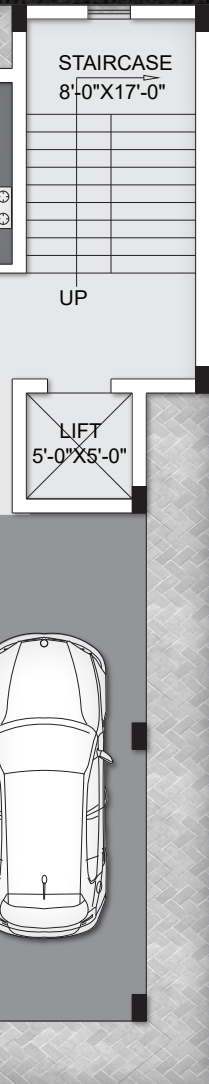


Ground Floor

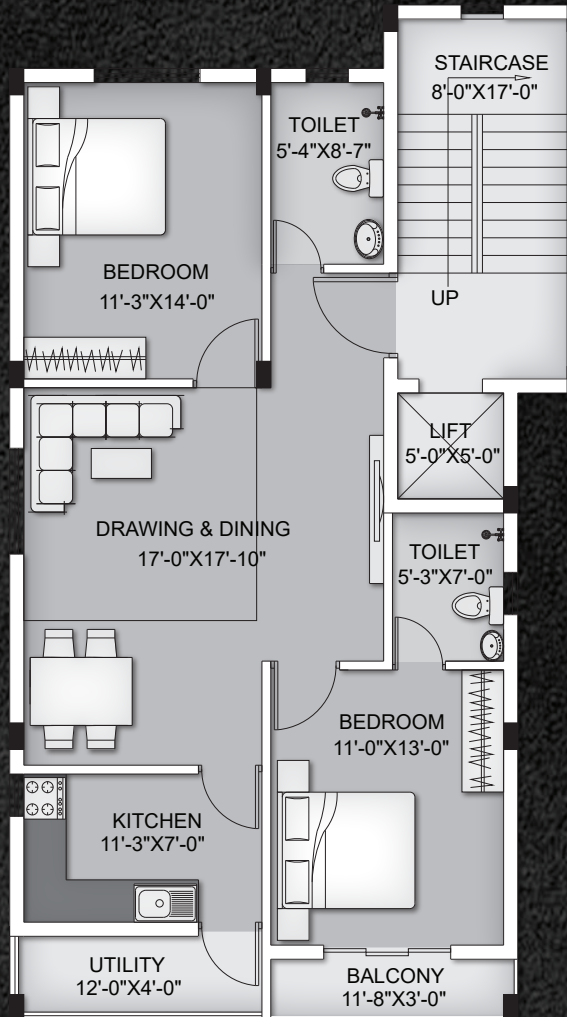




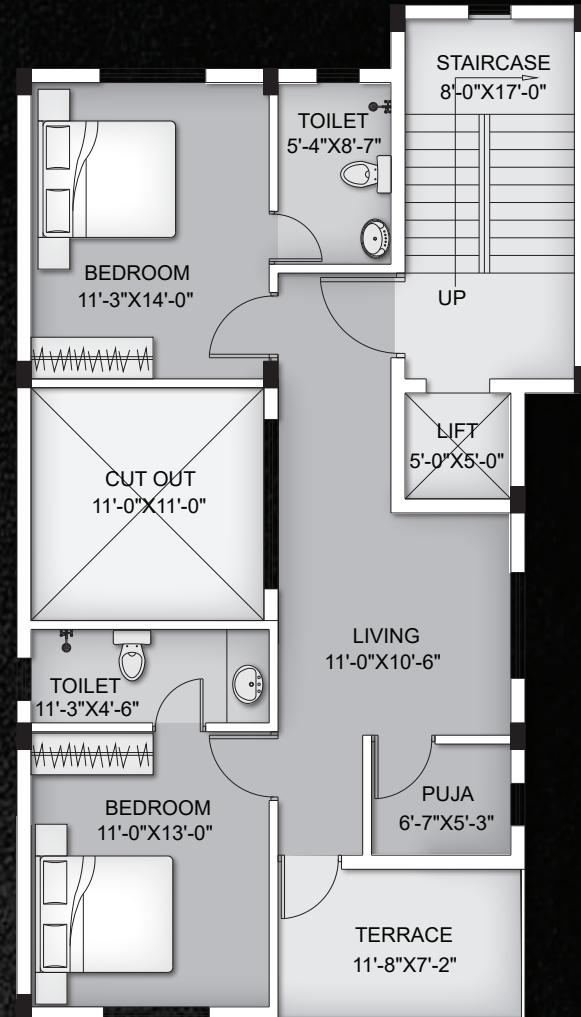
# Triplex plan (Type - 01)



First Floor



Second Floor



## AREA STATEMENT

Floor	BUA In Sft.
Ground Floor	1155 Sft
First Floor	1130 Sft.

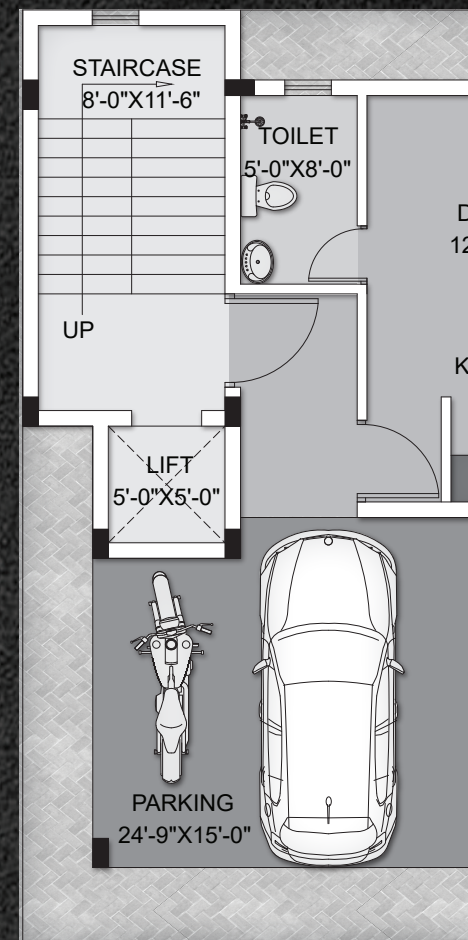
Second Floor	925 Sft.
Head Room	190 Sft.
Total	3400 Sft.



Type-02



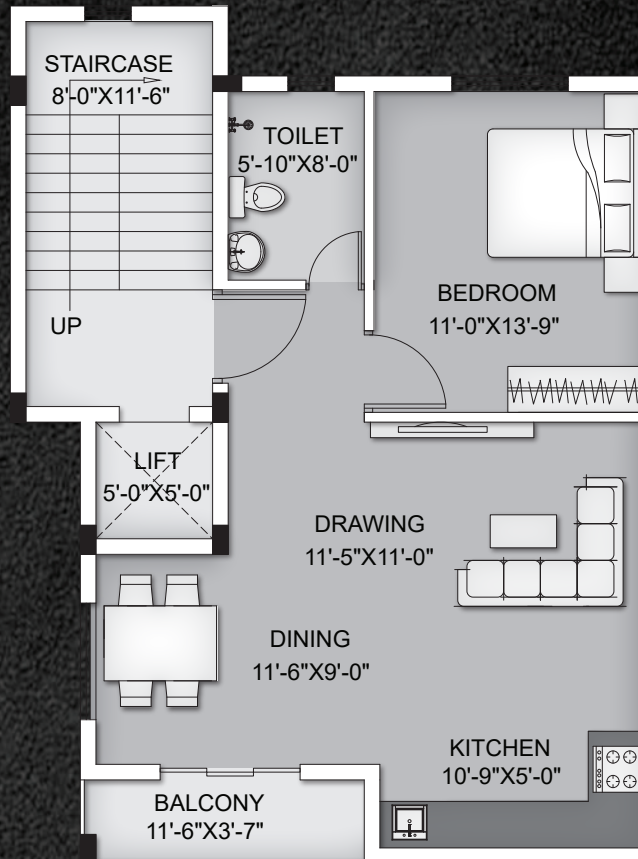
Ground Floor



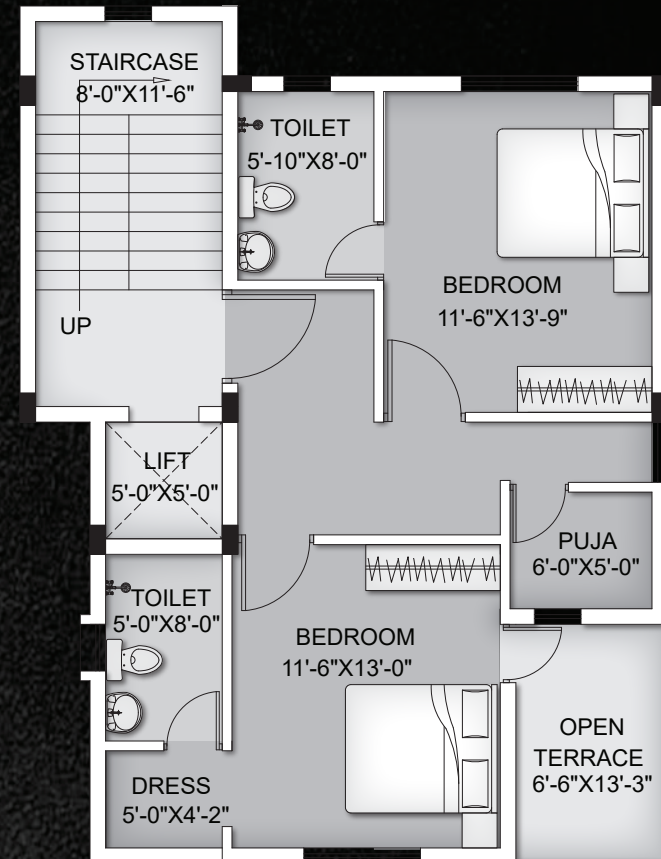


# Triplex plan (Type - 02)

First Floor



Second Floor



## AREA STATEMENT

Floor	BUA In Sft.
Ground Floor	910 Sft
First Floor	885 Sft.

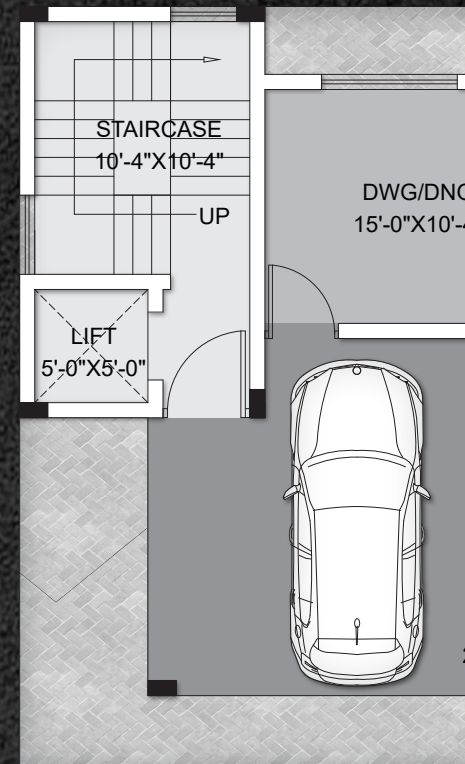
Second Floor	800 Sft.
Head Room	135 Sft.
Total	2730 Sft.



Type-03



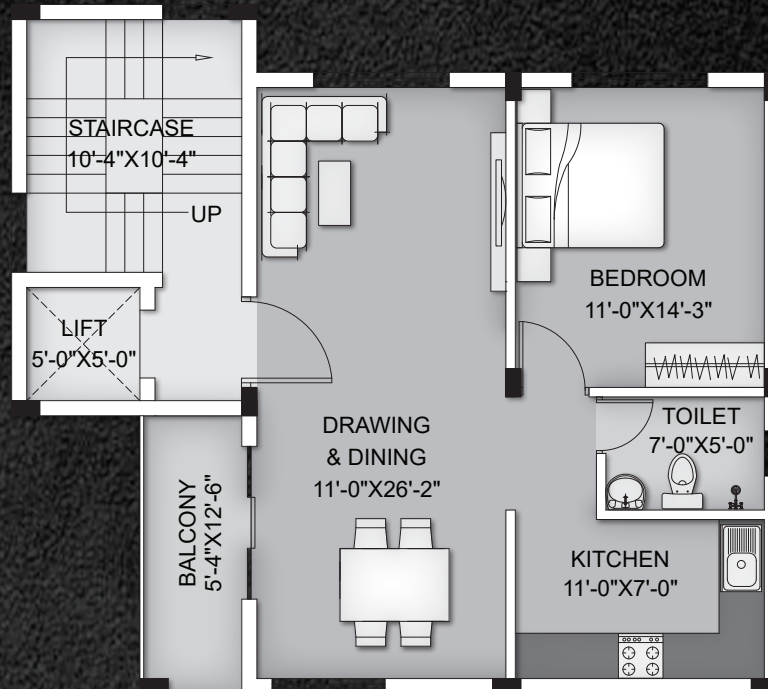
## Ground Floor



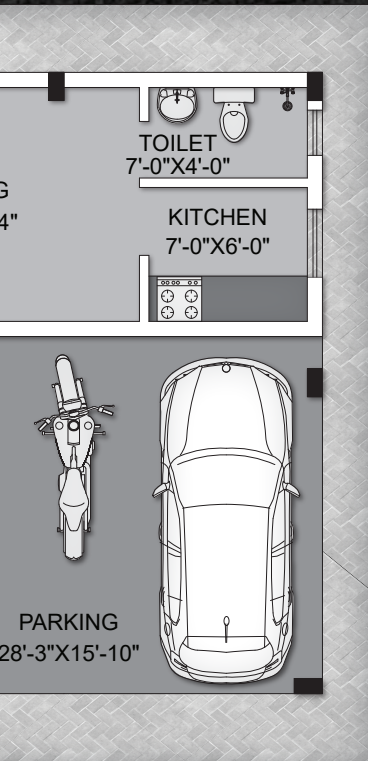
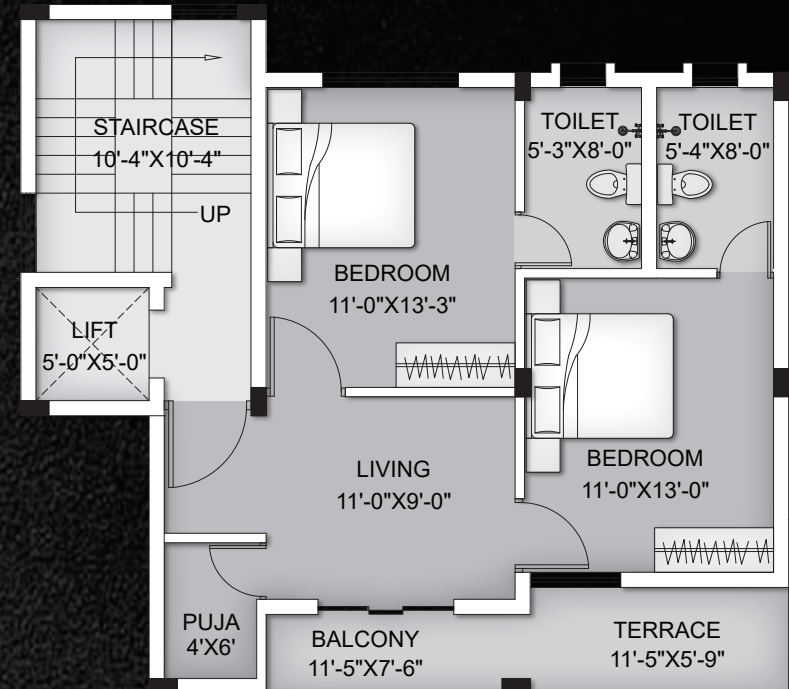


# Triplex plan (Type - 03)

First Floor



Second Floor



## AREA STATEMENT

Floor	BUA In Sft.
Ground Floor	894 Sft
First Floor	869 Sft.

Second Floor	815 Sft.
Head Room	152 Sft.
Total	2730 Sft.











## Specification

### STRUCTURE :

RCC framed structure. Fly Ash masonry work for walls.

### FLOORING FINISHES :

vitrified floor tiles in living, dining, kitchen, puja and bedrooms, Granite/Kota/marble finish to the staircase. Anti skid floor tiles in the toilets and balconies.

### KITCHEN :

Granite based kitchen top with stainless steel sink. 2' height ceramic tiles above cooking platform with modular points, provision for exhaust fan.

### DOORS :

Main door: Teak door & all other doors are of company made flush door.

### WINDOWS :

UPVC framed glass shutters with MS grill protection.

### ELECTRICAL :

Premium quality copper wire with modular switches and fitting. Provision for Telephone, Inverter, Internet Cable, A.C and Geyser point. Sanitary: Wash basin in Dining area, Jaguar/ Hardware/Equivalent closets, wash basins and health faucet will be provided in toilets with Jaguar/ Hardware/Equivalent CP fittings and wall mixture.

### WALL FINISH :

Internal walls: finished with two coat putty.

### EXTERNAL WALLS :

Finished with exterior weather coat paints. Asian/ Berger/Equivalent

### TOILET WALLS :

Finished ceramic glazed tiles upto 7' height.

### STAIRCASE :

Fitted with stainless steel railing.



Developer



DHARMABHOOMI HOMES  
TITAN OF TRUST

Contact Us

+91-90400 11888

The brochure is not a legal document. It has been produced for the general promotion of the development and for no other purpose. All information contained in this brochure is taken from design intent material and may be subjected to further design development. These details do not form any contract or a part of it and whilst every effort has been made to ensure the accuracy.